

City of Donald Urban Growth Boundary Expansion Study, 2018

Alternative A



- Legend**
- UGB
 - City Limits
 - Alternative A Areas
 - Detention Basin (No Development Potential)
- Zoning**
- C- Commercial
 - EI- Employment/Industrial
 - I- Industrial
 - P- Public
 - R7- Single Family Residential
 - RM- Multiple Family Residential
 - UTF- Urban Transition Farm

1,000 500 0 1,000 Feet

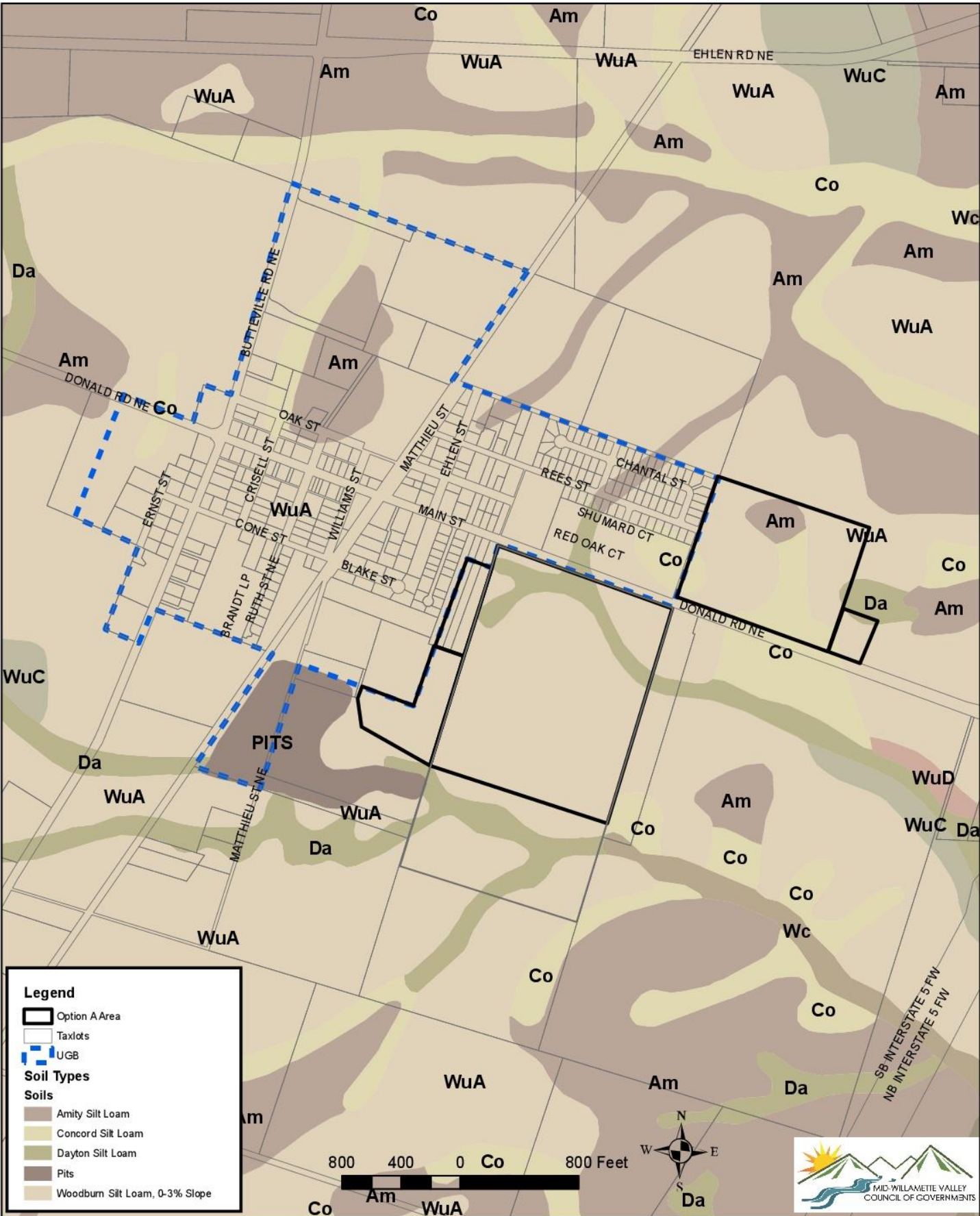
N
W E
S

MID-WILLAMETTE VALLEY
COUNCIL OF GOVERNMENTS

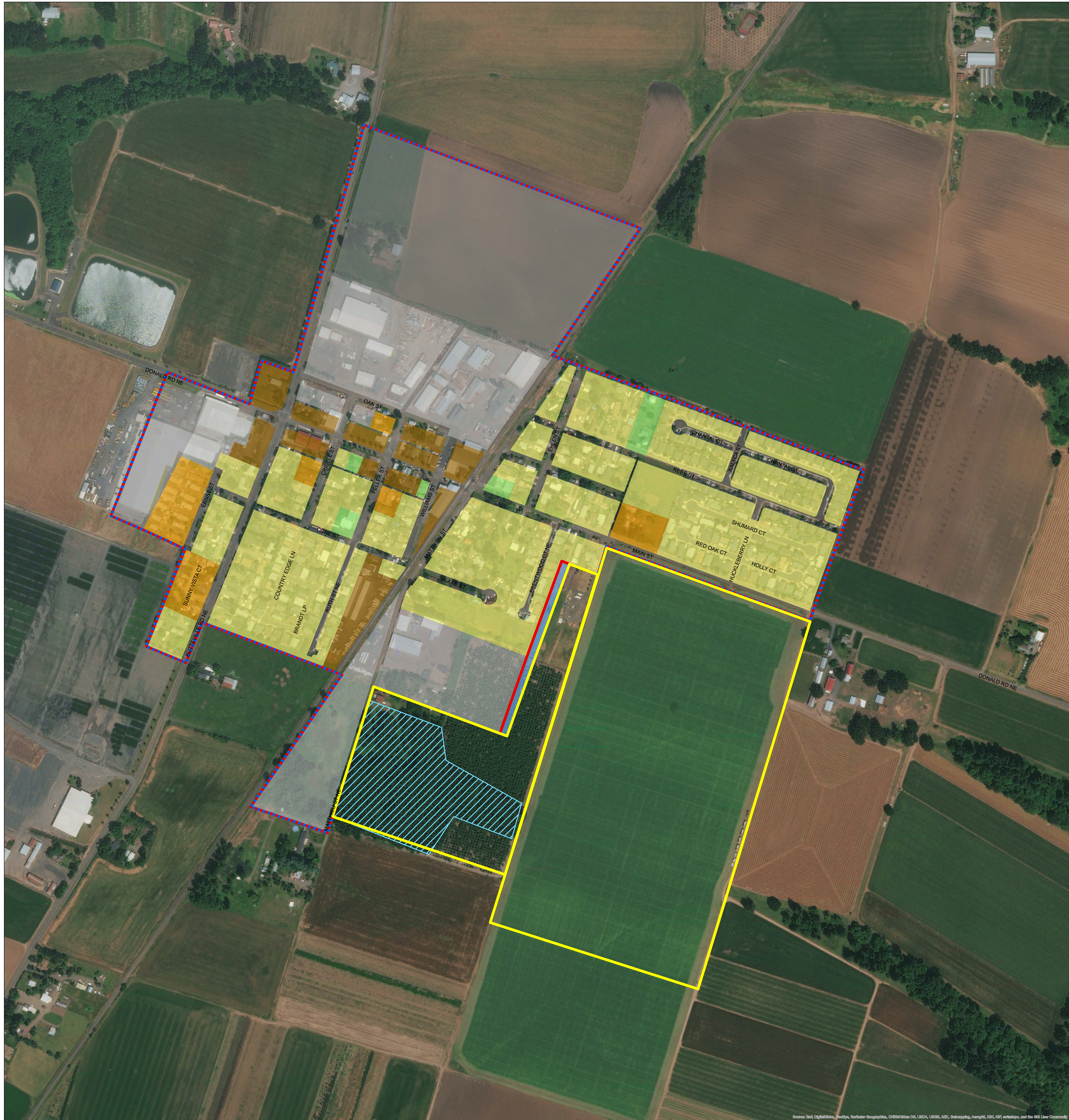
r:\city\donald\UGBExpansionStudy2018\AlternativeA.mxd 11/22/18

ALTERNATIVE A

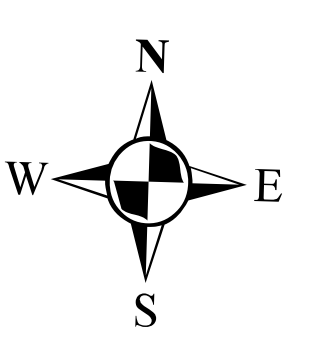
SOILS: 86% PRIME, 14% HIGH VALUE



City of Donald Urban Growth Boundary Expansion Study, 2018 Alternative B

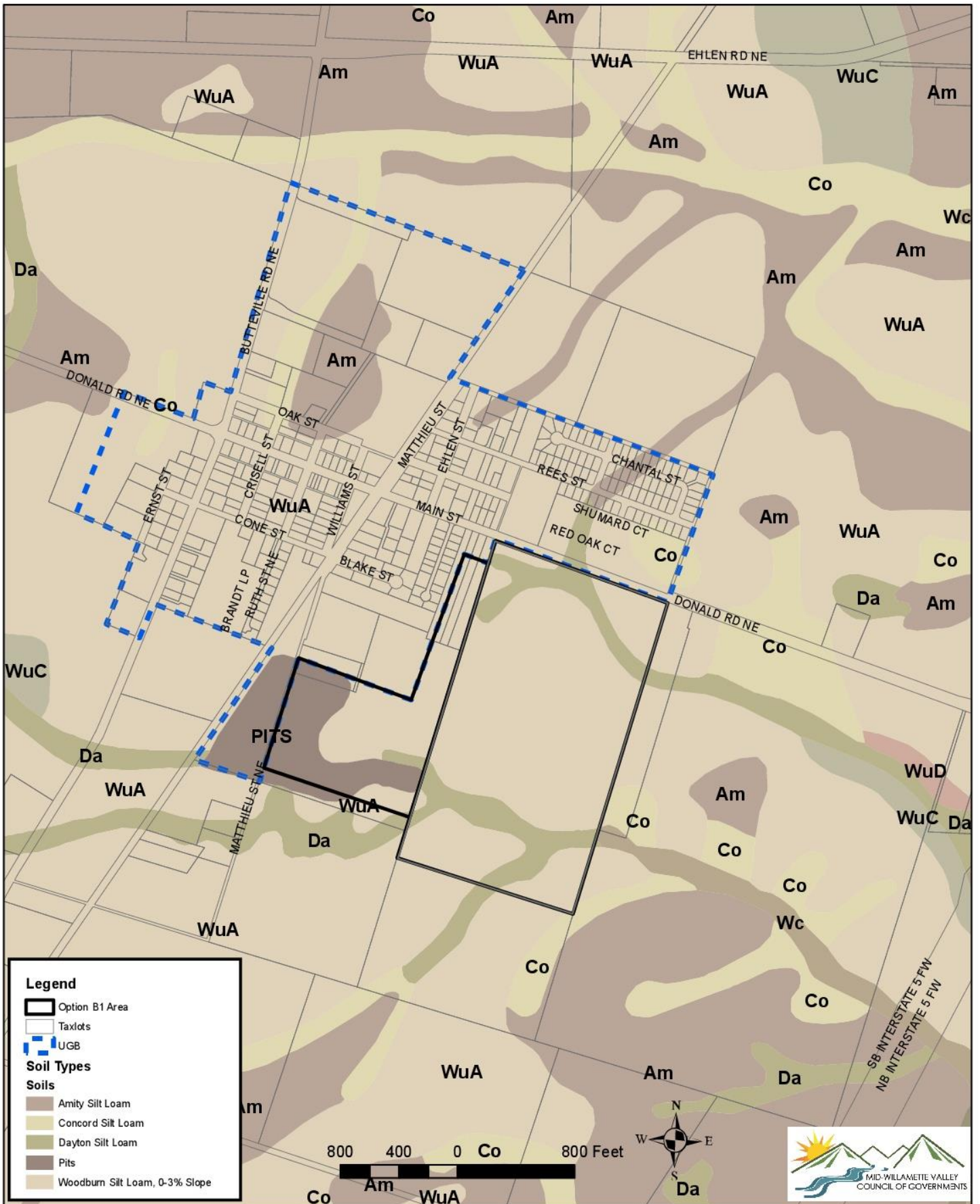


- Legend**
- UGB
 - City Limits
 - Alternative B Areas
 - Detention Basin (No Development Potential)
- Zoning**
- C- Commercial
 - EI- Employment/Industrial
 - I- Industrial
 - P- Public
 - R7- Single Family Residential
 - RM- Multiple Family Residential
 - UTF- Urban Transition Farm



ALTERNATIVE B

SOILS: 84% PRIME, 16% HIGH VALUE



City of Donald Urban Growth Boundary Expansion Study, 2018 Alternative C



- Legend**
- UGB
 - City Limits
 - Alternative C Areas
 - Detention Basin (No Development Potential)
- Zoning**
- C- Commercial
 - EI- Employment/Industrial
 - I- Industrial
 - P- Public
 - R7- Single Family Residential
 - RM- Multiple Family Residential
 - UTF- Urban Transition Farm

900 450 0 900 Feet

N
W E
S

MID-WILLAMETTE VALLEY
COUNCIL OF GOVERNMENTS

r:\city\donald\UGBExpansionStudy2018\AlternativeB2.mxd In 2/23/18

ALTERNATIVE C

SOILS: 79% PRIME, 21% HIGH VALUE

